

Wood Carving Tools

HIGH EFFICIENCY

# HAND CRAFT

Blade's high-speed reciprocation enables fast, beautiful and elegant carving, for very hard wood as well.



1. **High efficiency** : You can carve wood with one third of force needed for manual carving and at 3-5 times faster, so that you won't get tired in carving
2. **Sharp carving** : You can carve the hardest wood easily and smoothly, because the cutter reciprocates at high speed (12,000s.p.m).
3. **Safe and easy to handle** : The machine uses free-floating mechanism, so that its cutter reciprocates only when pressed onto wood. Therefore, you can handle the machine easily and safely. Furthermore, it is light (approx.800g or 2 lbs) and easy to grab.
4. **Rotary carver** : Only by attaching the rotary head, Hand Craft becomes a rotary carver. The head is easy to change. (Applicable to the model HCT-30S)

**AUTOMACH**



**TOKYO AUTOMACH CO., LTD.**

2-7-10.Hatanodai Shinagawa-ku,Tokyo 142-0064 JAPAN

Phone:+81-3-5702-0522 Fax:+81-3-5702-0552

<http://www.automach.com>

E-mail: [a@automach.com](mailto:a@automach.com)

# (Handy Electric Wood Carving Tool)



# HAND CRAFT



## Specifications

<b>Body</b>	Speed - 12,000s.p.m 12,000r.p.m.
	Size - 235mm length × 44mm dia.
	Weight - Approx. 800g.(2 lbs.)
<b>Motor</b>	Rated voltage - AC 100V/120V/220V/240V <i>Information on your local power voltage</i>
	Rated power consumption - 40W(MAX.80W)
	Frequency - 50/60Hz
	Operable hour - Continuous.

Design and specifications are subject to change without notice.

※Please let us know your local power voltage.

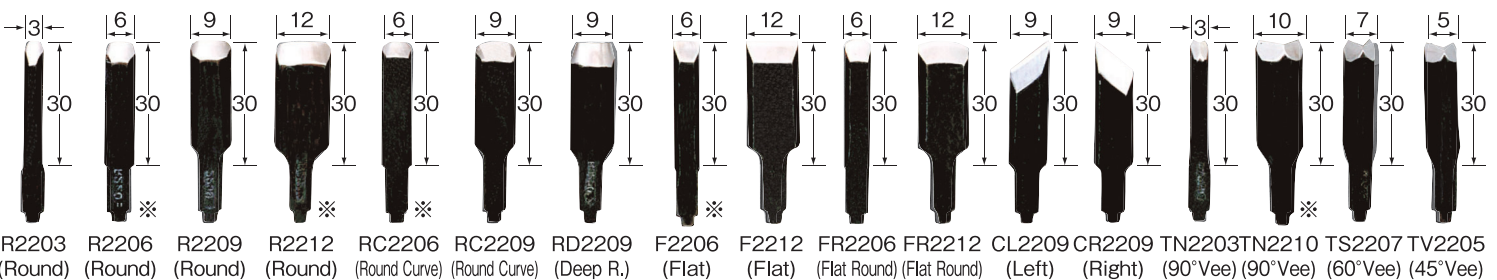
Item No.	Name of parts	Quantity	
		Model	
		30A	30S
①	Body	1	1
②	Reciprocation head	1	1
③	Accessory blades marked with※	5	5
④	Wrench (12mm)	1	1
⑤	Hanger	1	1
⑥	Rotary head(chuck φ1~6mm)		1
⑦	Chuck key		1
⑧	Rotary cutters and abrasives		10
⑨	Cutter holder		1
⑩	Stop bars		1

MADE IN JAPAN

## Cutter Selection 38types

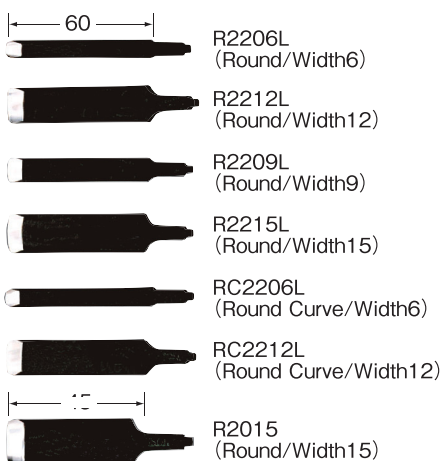
Accessory blades coming with HCT-30 A or S (5 pieces marked with※)

■Standard type 17types

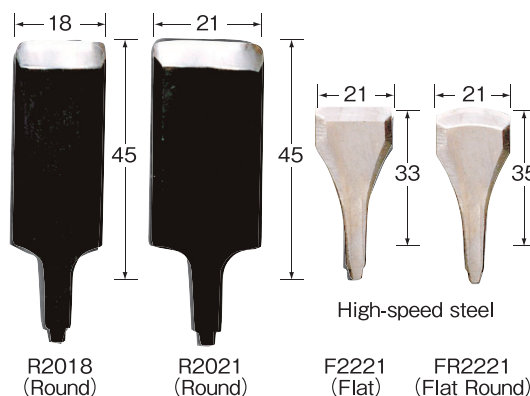


size in mm

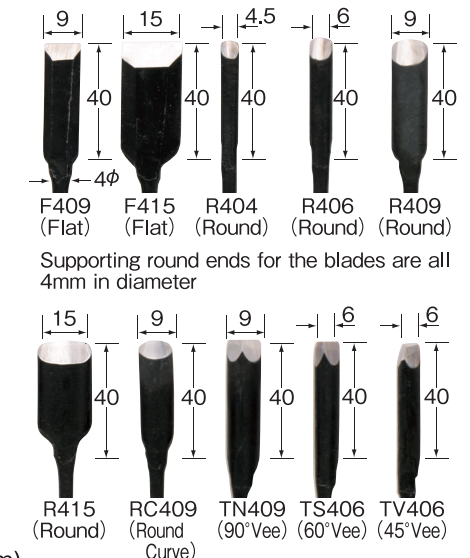
■Longer Type 7types



■Wider type 4types



■Special 10 blades



Various shapes of cutting blades are available.

Each cutter is made of high quality alloy tool steel and specially hardened.(1"=25.4mm)

**FOR SCULPTURE · CARVING · CUTTING · POLISHING · DRILLING**

**ELECTRIC**

# WOOD CARVER



**'Blade's high-speed reciprocation enables fast, beautiful and elegant carving, for very hard wood as well.**

- 1) You can carve with one third of force at 3 - 5 times greater speed, when comparing with manual carving, and therefore you won't get tired.
- 2) The grabbing portion is as small as 30mm in diameter., so that you can handle this tool like a manual carving knife.
- 3) The number of blade reciprocation has become 12,000 per minute which is 2 times greater than the conventional model. Along with 1.5mm (1/16inch) reciprocation width, the cut amount has increased by 30 - 40%
- 4) The flexible shaft (power carrying wire) has become softer and lighter, so that you can use the tool more easily.
- 5) Professionals and woodworking people admire that finished surface is finer, when compared with finished surface by manual carving.

HAVE A "WOOD CARVER", AND YOU HAVE HANDS OF A CRAFTSMAN.

## **SAFE TO USE:**

A free-floating structure keeps the cutter motionless while the cutting blade is not pressed against the wood.



**AUTO MACH**



**TOKYO AUTOMACH CO., LTD.**

2-7-10.Hatanodai Shinagawa-ku, Tokyo 142-0064 Japan

Phone:81-3-5702-0522 Fax:81-3-5702-0552

<http://www.automach.com>

E-mail: [a@automach.com](mailto:a@automach.com)

# WCS-100 Wood Carver



The flexible shaft which carries power is small in diameter and flexible, so that you can handle the tool easily and enjoy very good workability.

Item No.	Name	Specifications	Quantity
①	wood carver head	special aluminum alloy	1
②	flexible shaft	1.5 m (5 feet) long	1
③	wrench	12mm and 6mm	1
④	Accessory blades	marked with ※ in figure below	5
⑤	power cord	2 meters long with plug	1
⑥	carrying case	steel 250w×170d×230h 11"×6 3/4"×13 3/8"	1
⑦	induction motor	300W,100V·120V, 200V·240V single phase 50/60Hz. Operable hour -Continuous	1

MADE IN JAPAN

※Please let us know your local power voltage.

Design and Specifications are subject to change without notice.

## Other useful attachments

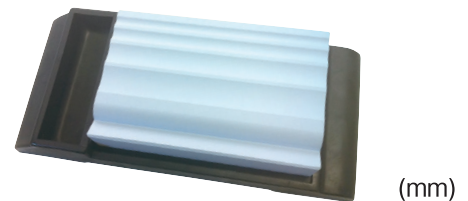
### Type RH-102 Rotary Head

When you need rotation instead of reciprocation, just connect RH-102 to the flexible shaft of a Wood Carver. The Wood Carver becomes a rotary tool. Chucking capacity is up to 6.5mm (1/4")



### Type WG-200 Honing Stone

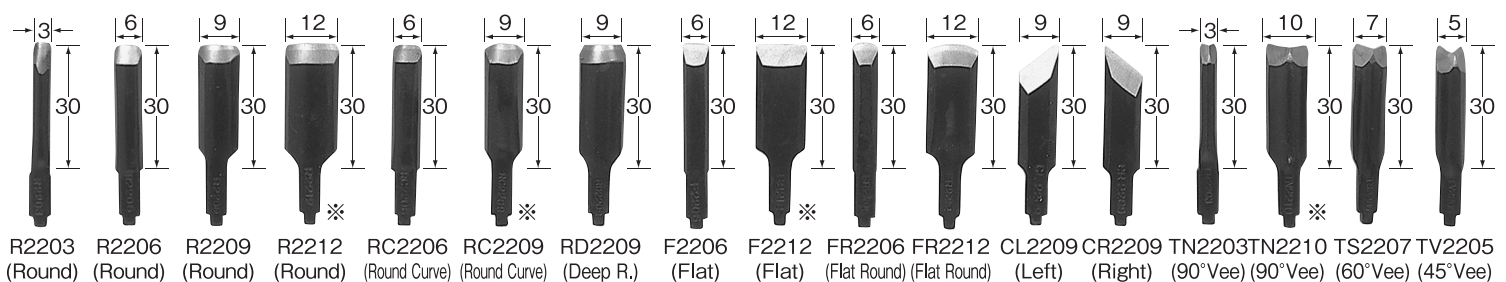
Middle meshes has 4 kinds of channels on surface. Available both water and oil.



## Cutter Selection 38types

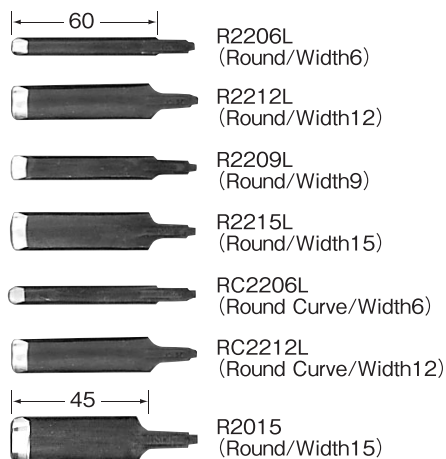
Accessory blades coming with WCS-100(5 pieces marked with※)

### Standard type 17types

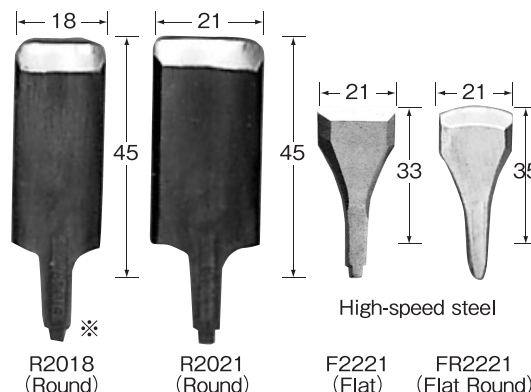


size in mm

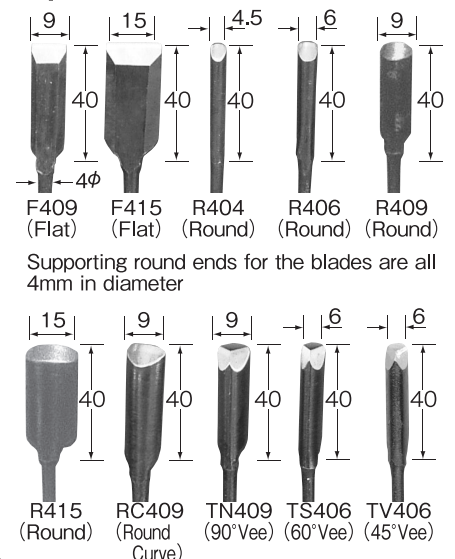
### Longer Type 7types



### Wider type 4types



### Special 10 blades



Supporting round ends for the blades are all 4mm in diameter

High-speed steel

Various shapes of cutting blades are available.

Each cutter is made of high quality alloy tool steel and specially hardened. (1"=25.4mm)